

**Дополнителен материјал за практична настава по  
хистологија и ембриологија (2)**

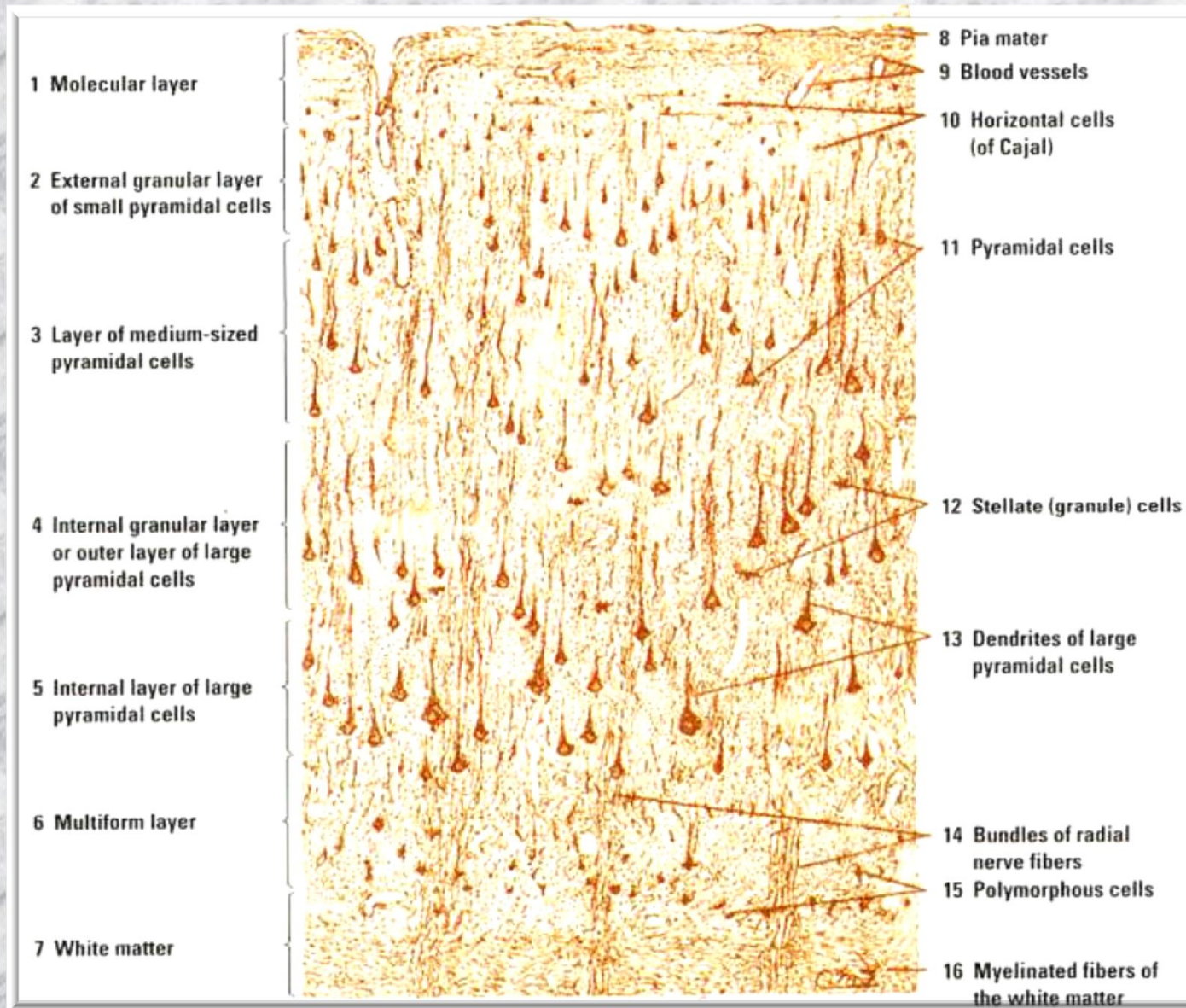
**Изготвила Катедрата за хистологија и ембриологија  
Медицински факултет – Универзитет „Св. Кирил и Методиј“ -Скопје**

**ЦЕНТРАЛЕН  
НЕРВЕН СИСТЕМ  
ЦНС**

A microscopic image of brain tissue, likely the cerebral cortex, showing a dense network of neurons and glial cells. The neurons are arranged in layers, with their cell bodies (soma) and dendrites visible. The overall appearance is a complex, interconnected network of cells.

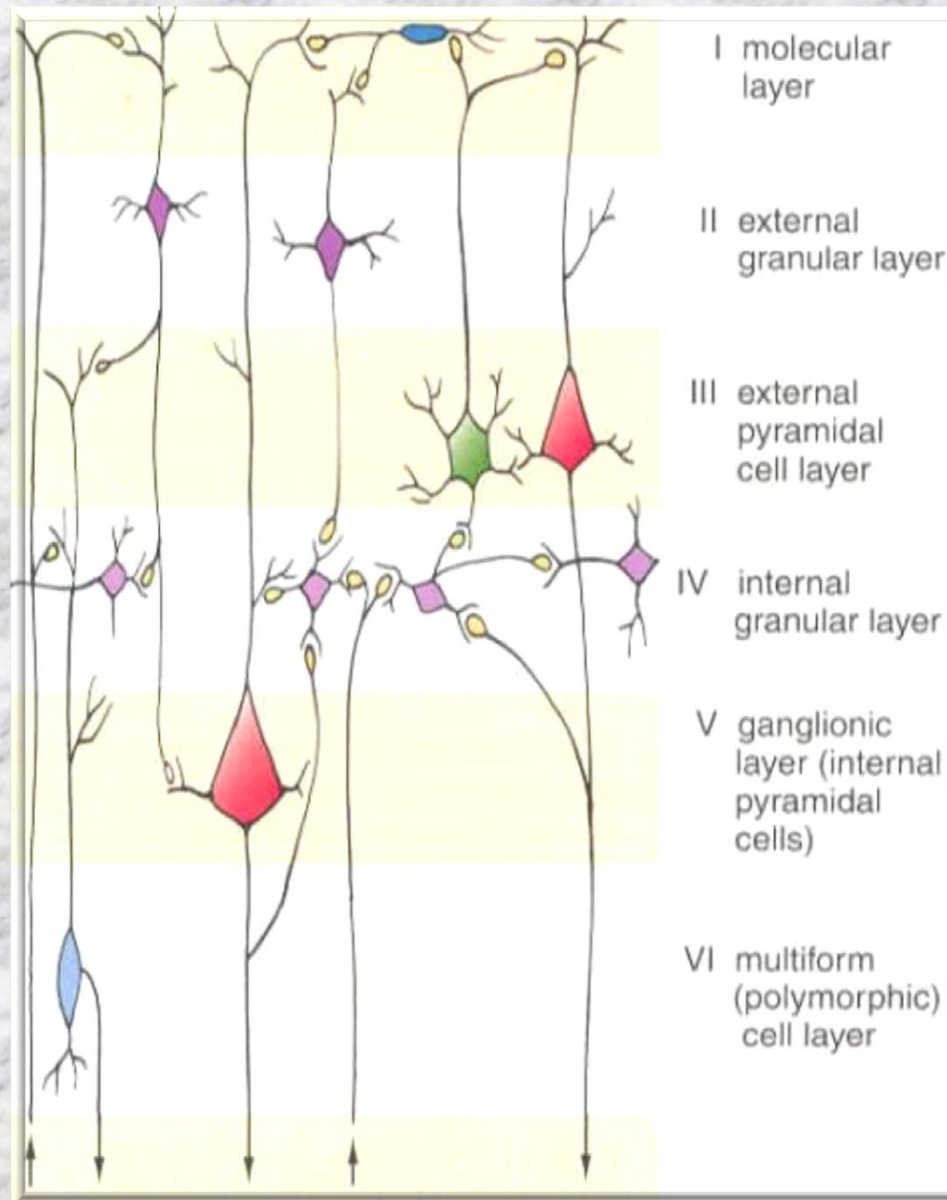
- **Cerebrum**

# Cortex cerebri



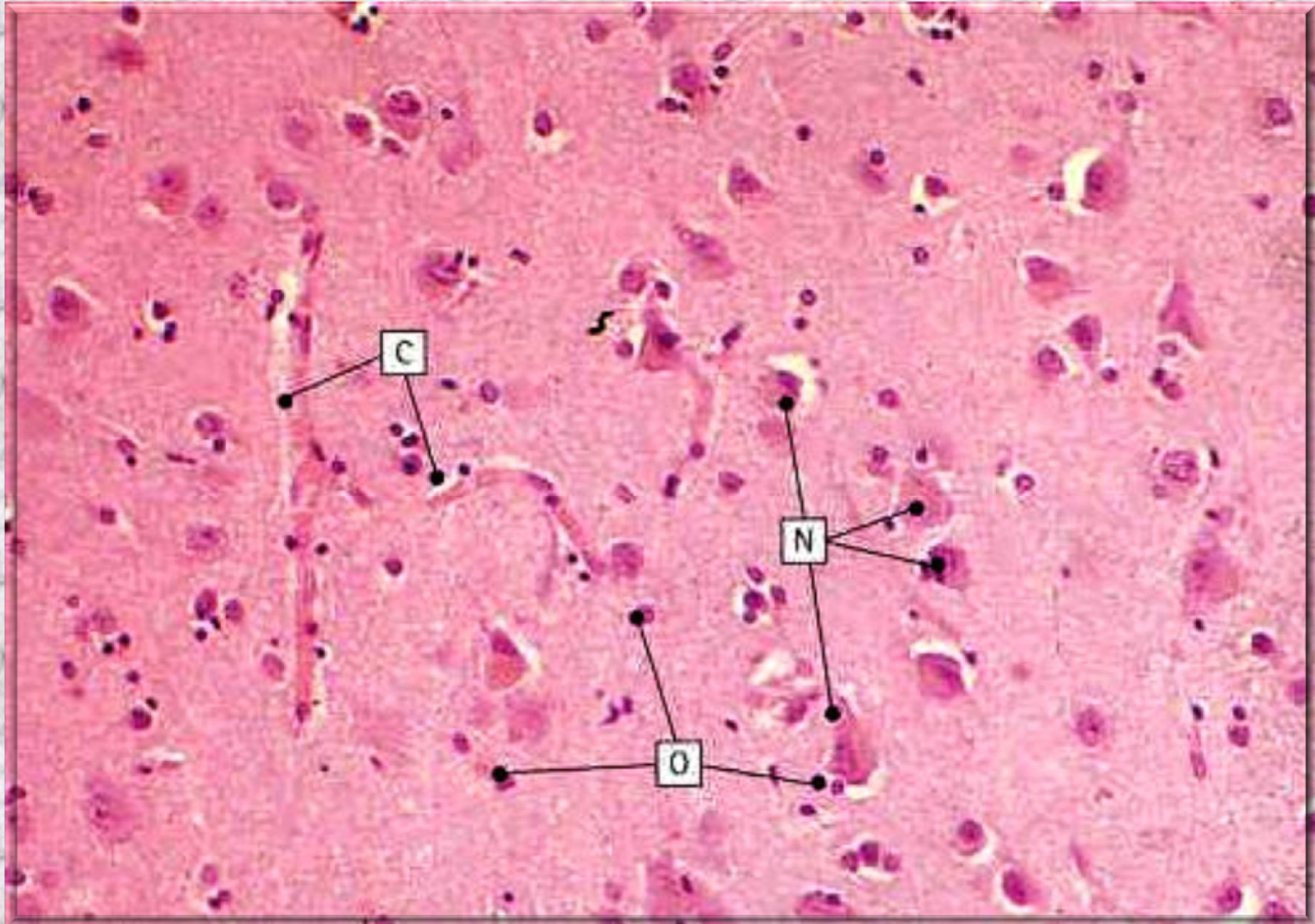
Шематски приказ

# Cortex cerebri



Шематски приказ

# Cortex cerebri



- N – неврони
- O – олигодендроглија клетки
- C – капилари

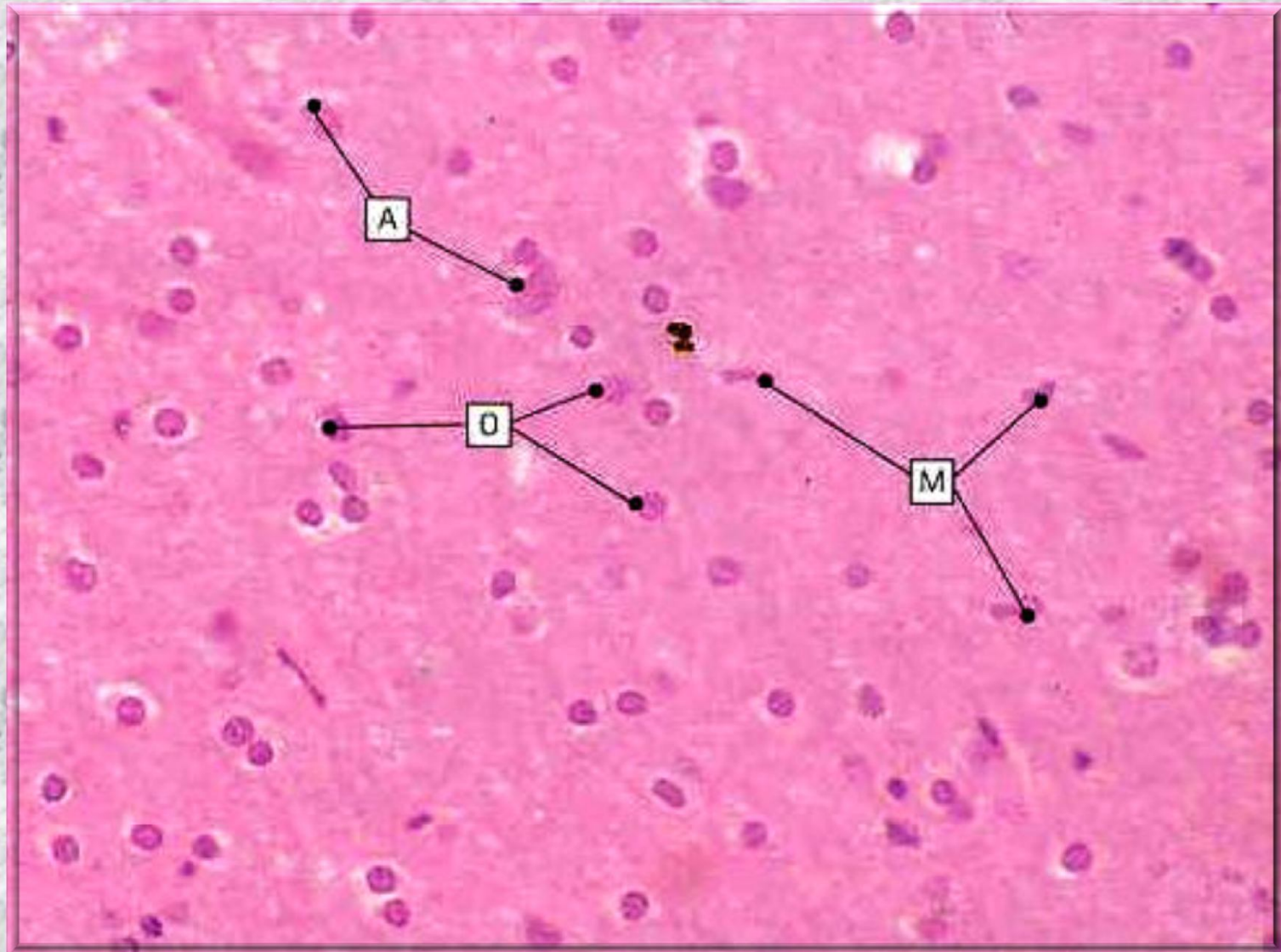
Бојење: HE

# Cortex cerebri



Шематски приказ на пирамидни нервни клетки

# Medulla cerebri



- A – астроцити
- O – олигодендроглија клетки
- M – микроглија клетки

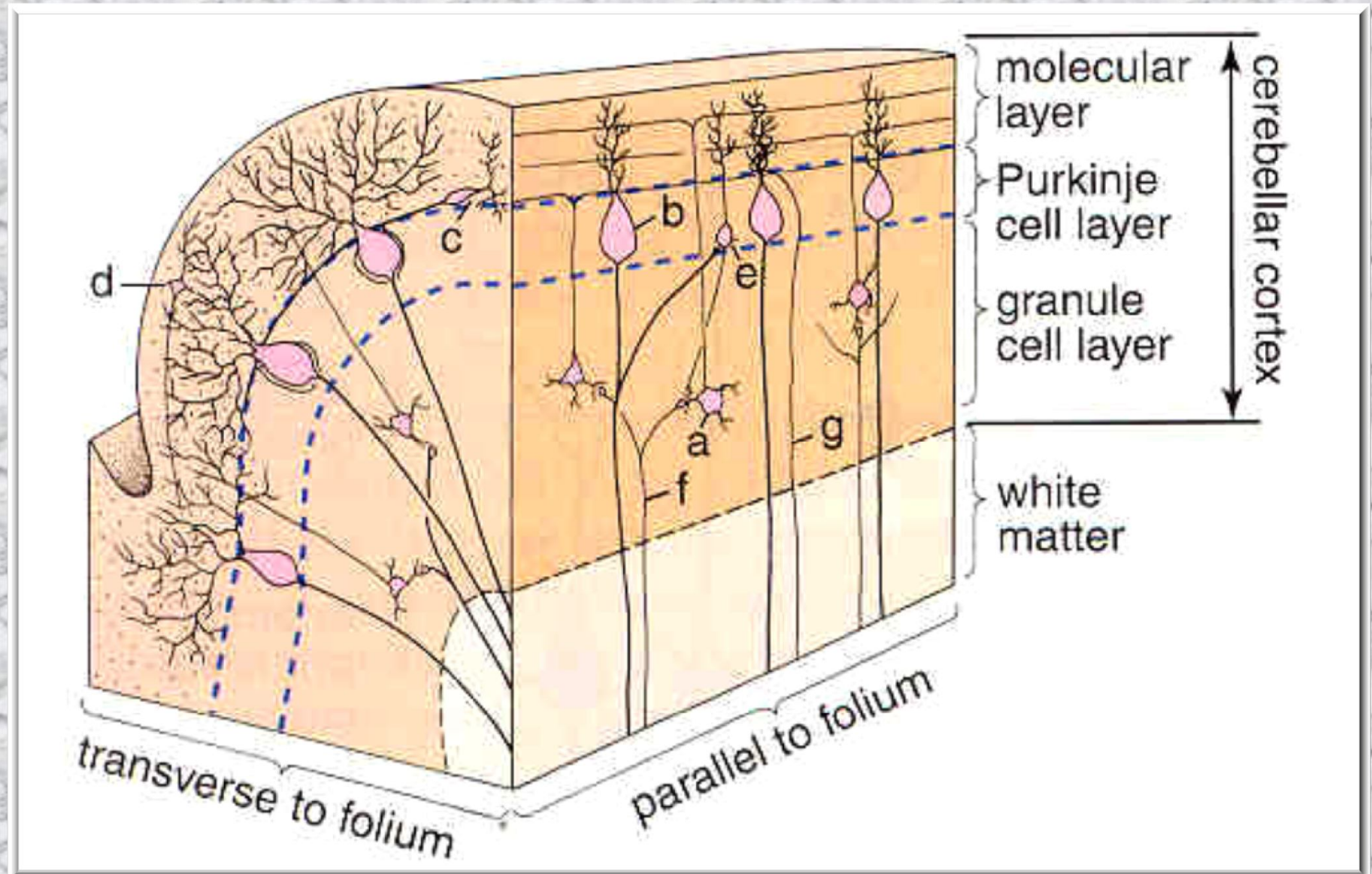
Бојење: HE



- **Cerebellum**

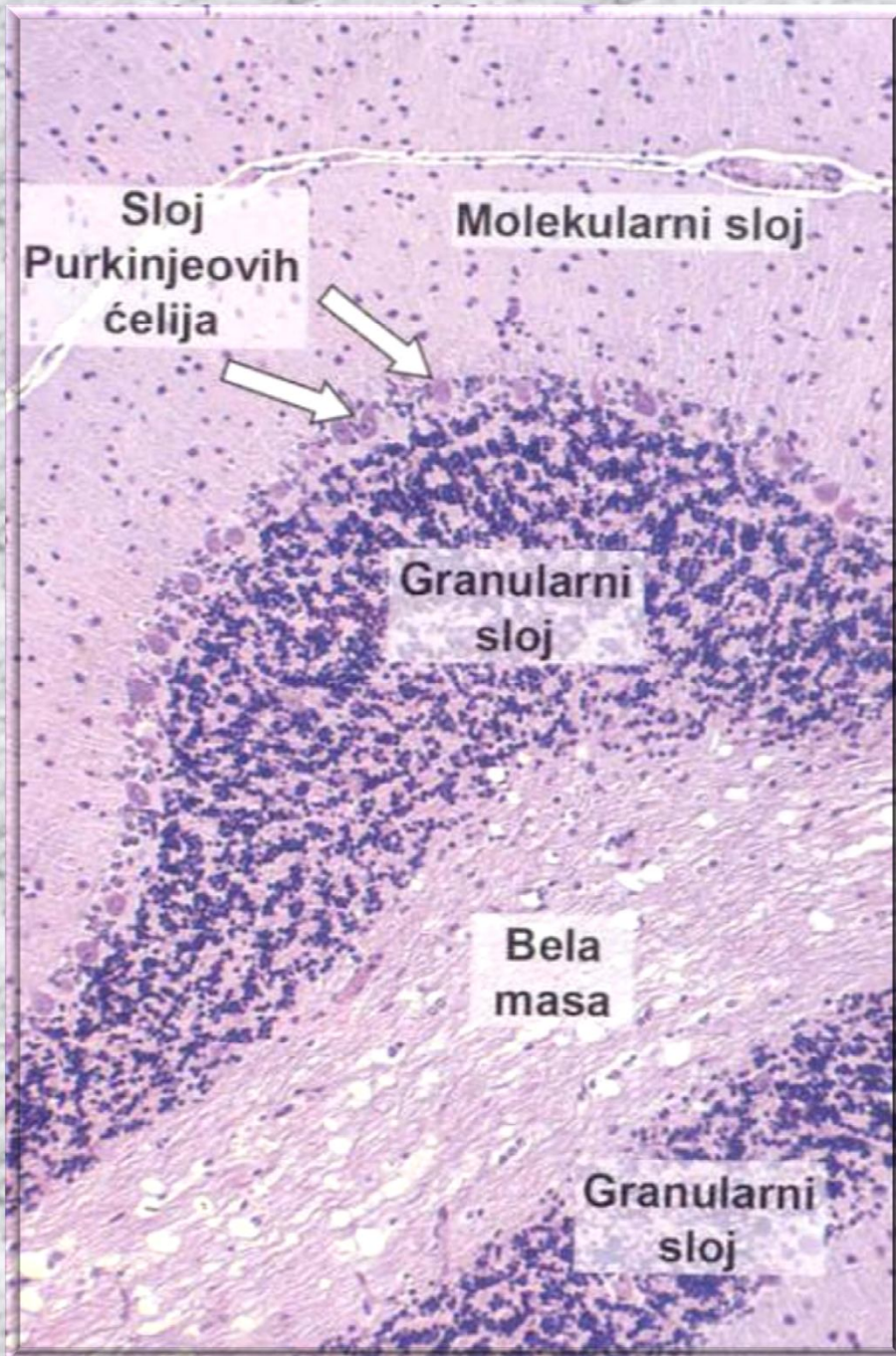


# Cerebellum



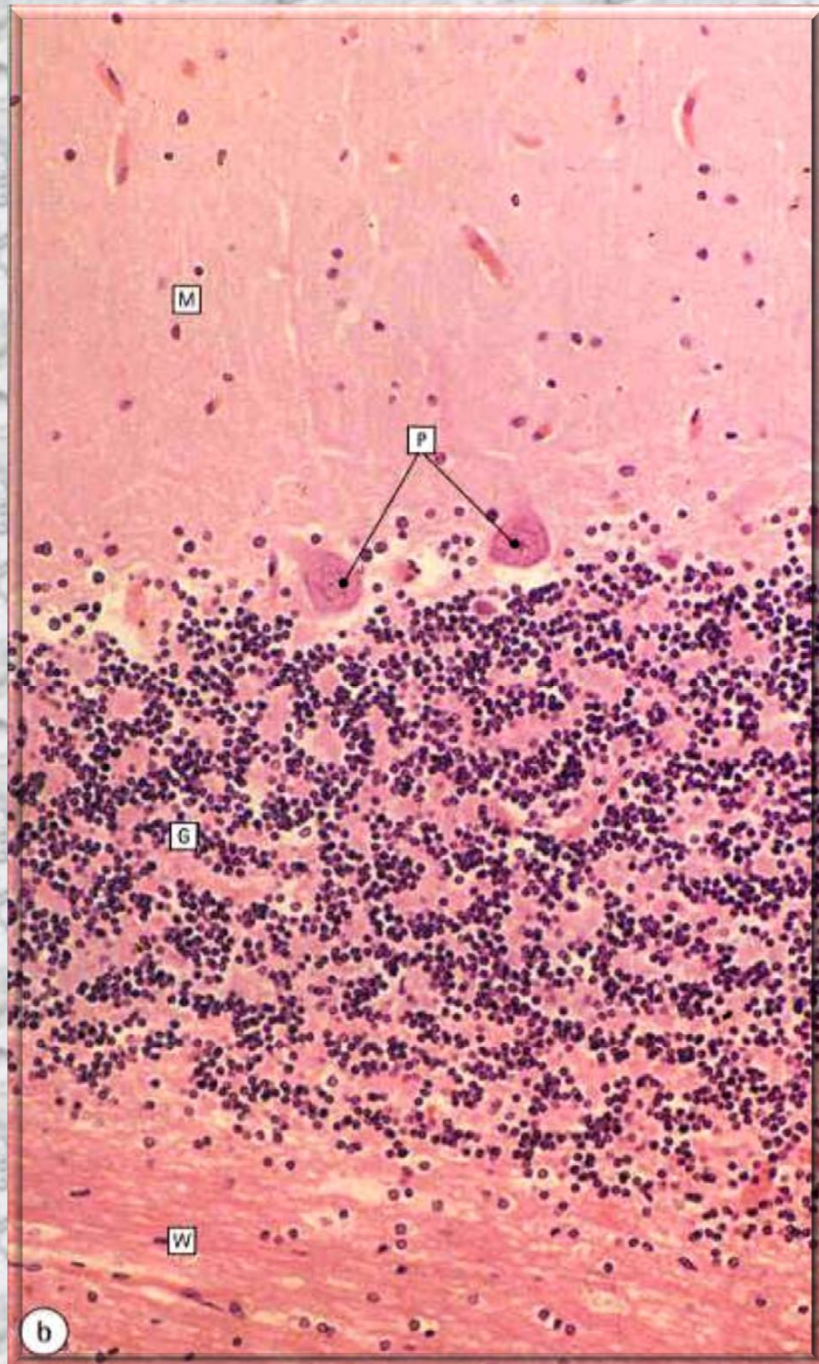
Шематски приказ

# Cerebellum



Микрофотографија на cortex и  
medulla cerebelli  
Бојење: HE

# Cerebellum

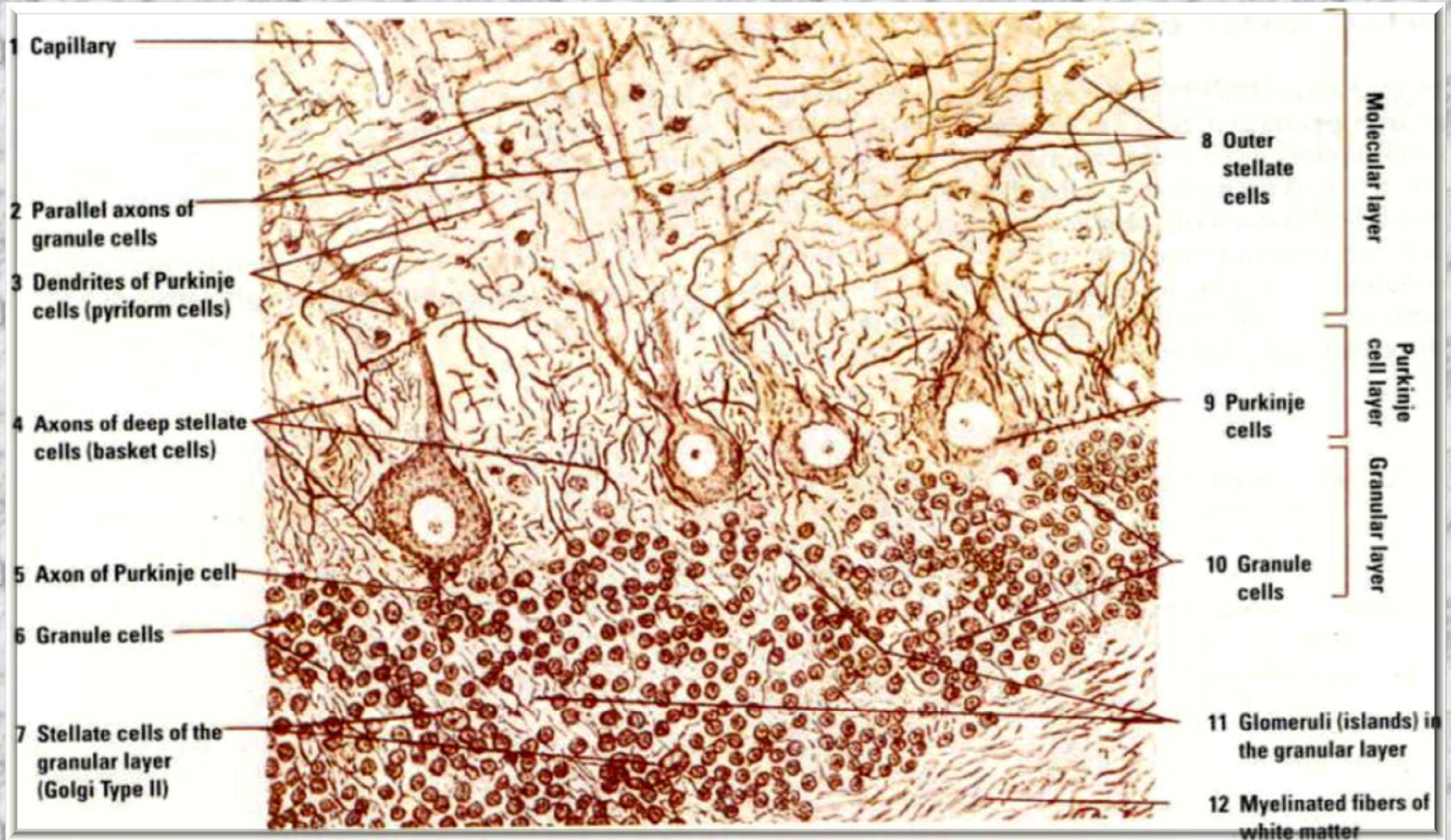


Микрофотографија на cortex и  
medulla cerebelli

Бојење: HE

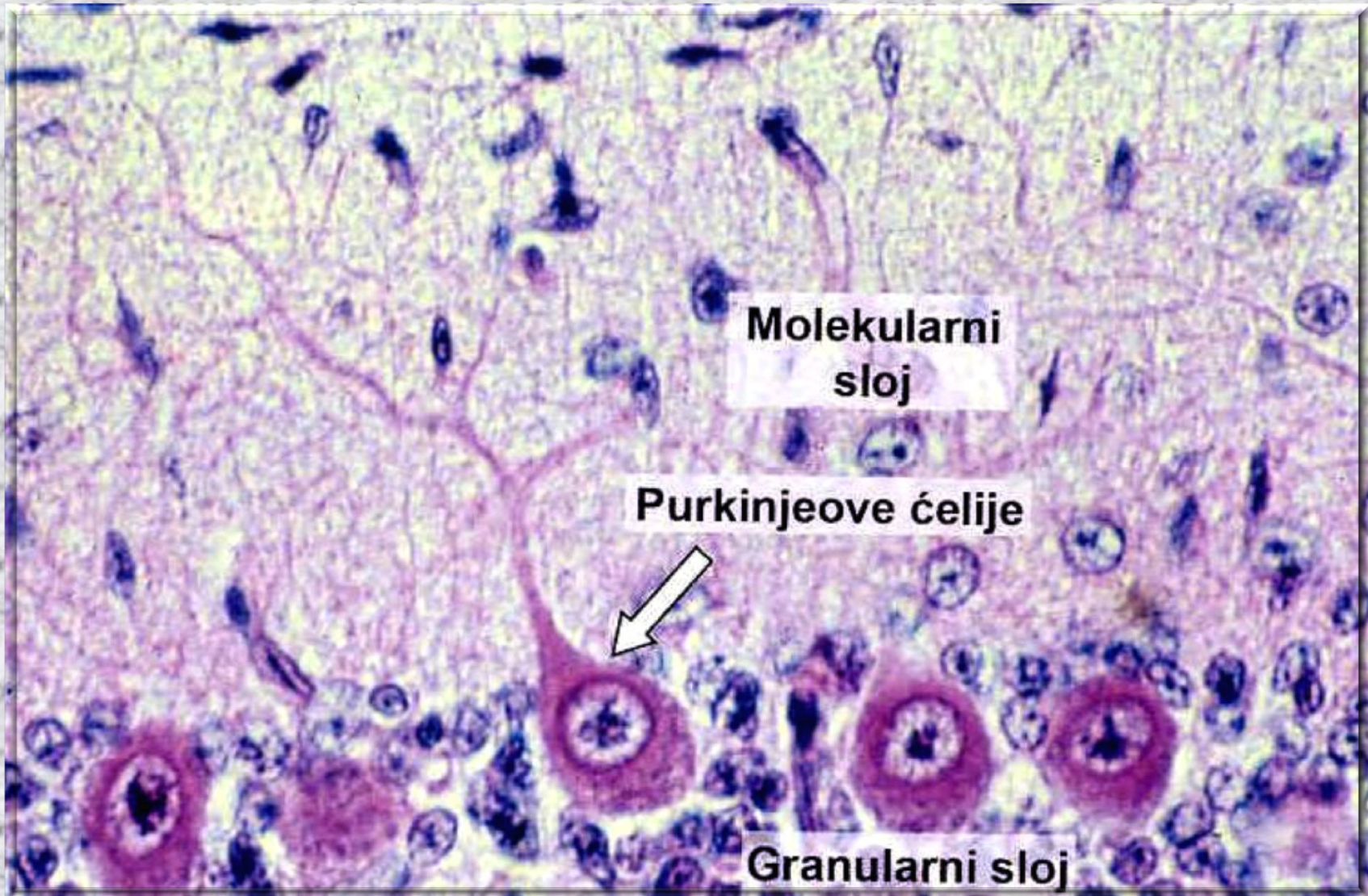
- M – молекуларен слој
- P – Purkinje-ови клетки
- G – гранулосен слој
- W – бела маса

# Cerebellum



Цртеж на слоевите на cortex cerebelli и дел од белата маса на малиот МОЗОК

# Cerebellum

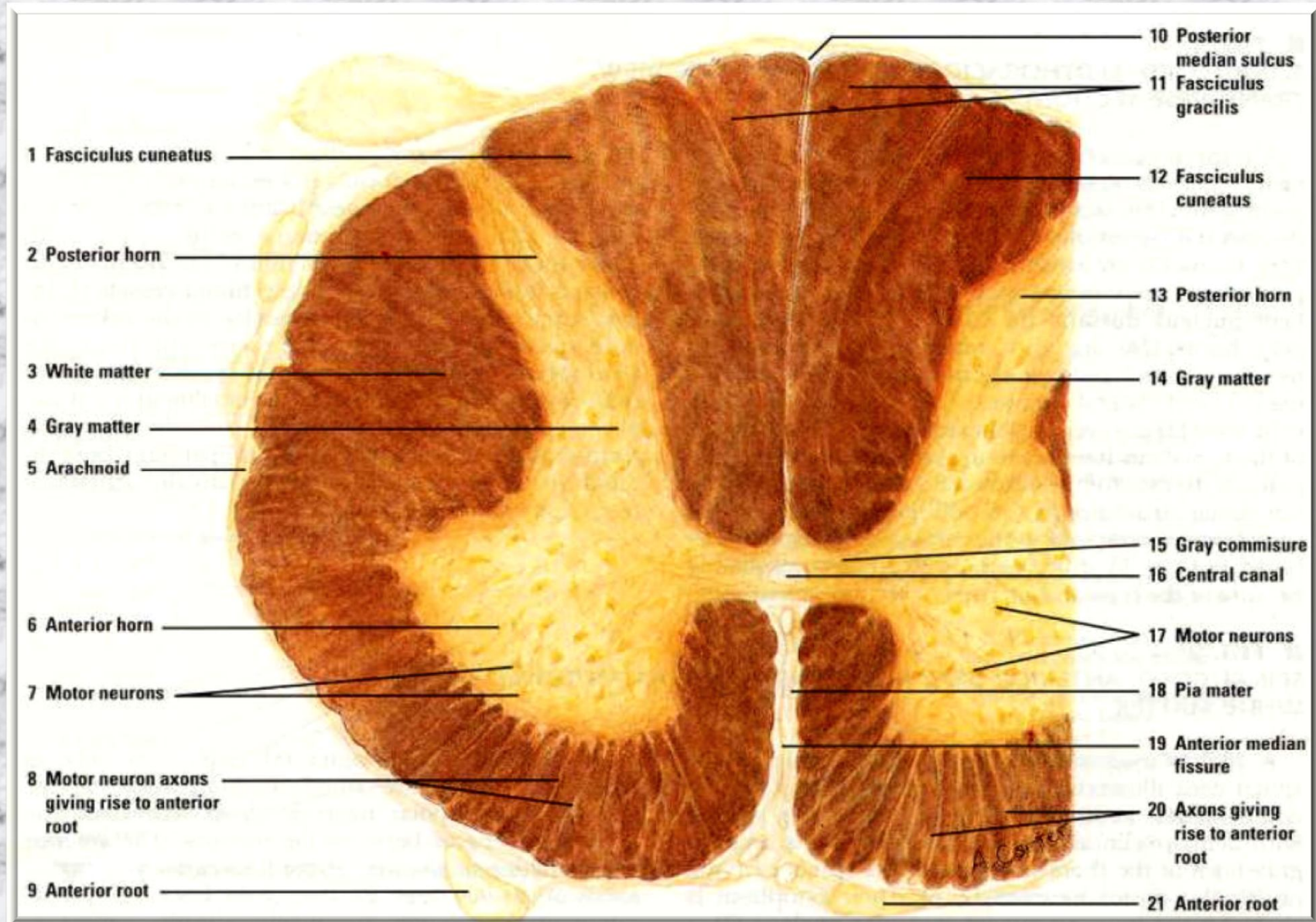


Микрофотографија на првите два слоја од cortex cerebelli  
(боење: HE, поголемо зголемување)

A microscopic image of spinal cord tissue, showing a repeating pattern of light and dark spots. The light spots are arranged in a regular, grid-like pattern, while the dark spots are smaller and more irregularly shaped. The overall appearance is that of a highly organized, repeating structure.

• **Medulla spinalis**

# Medulla spinalis



Шематски приказ

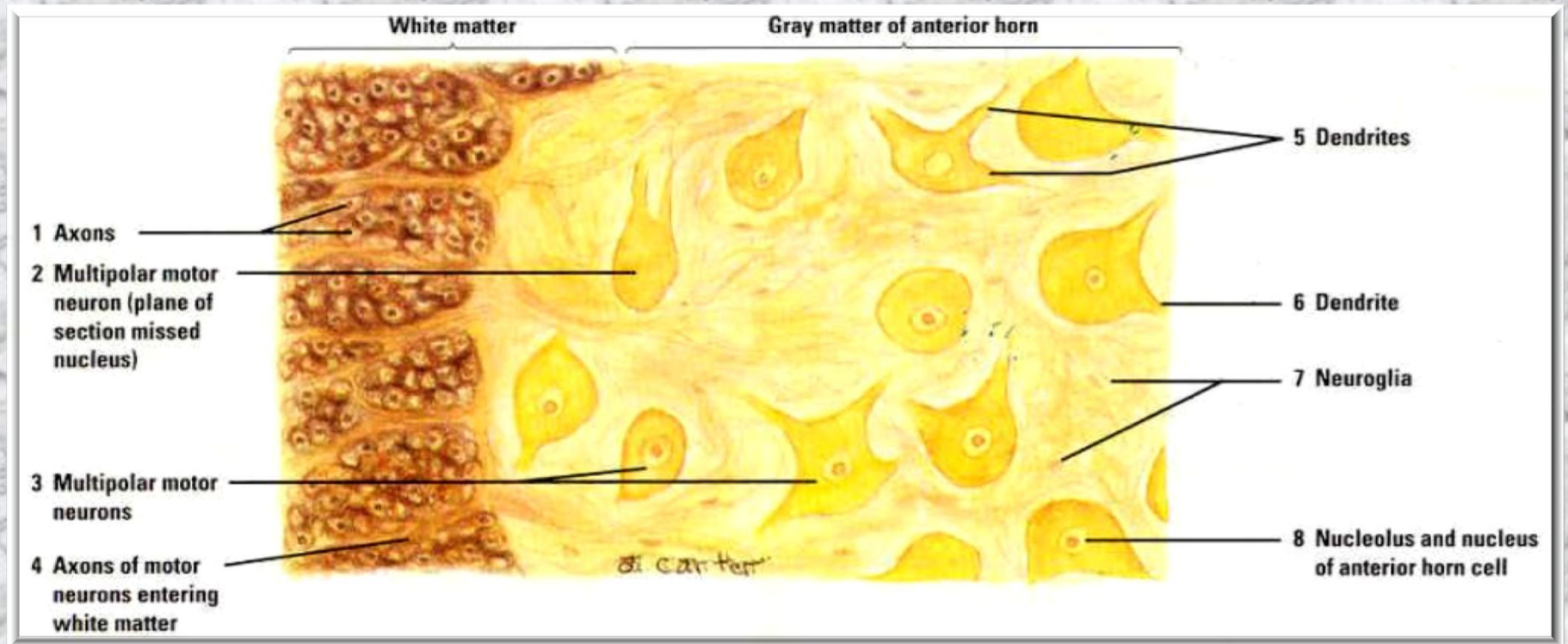
# Medulla spinalis



Микрофотографија на canalis centralis обложен со епендимни клетки (E) и исполнет со liquor cerebrospinalis (CSF)

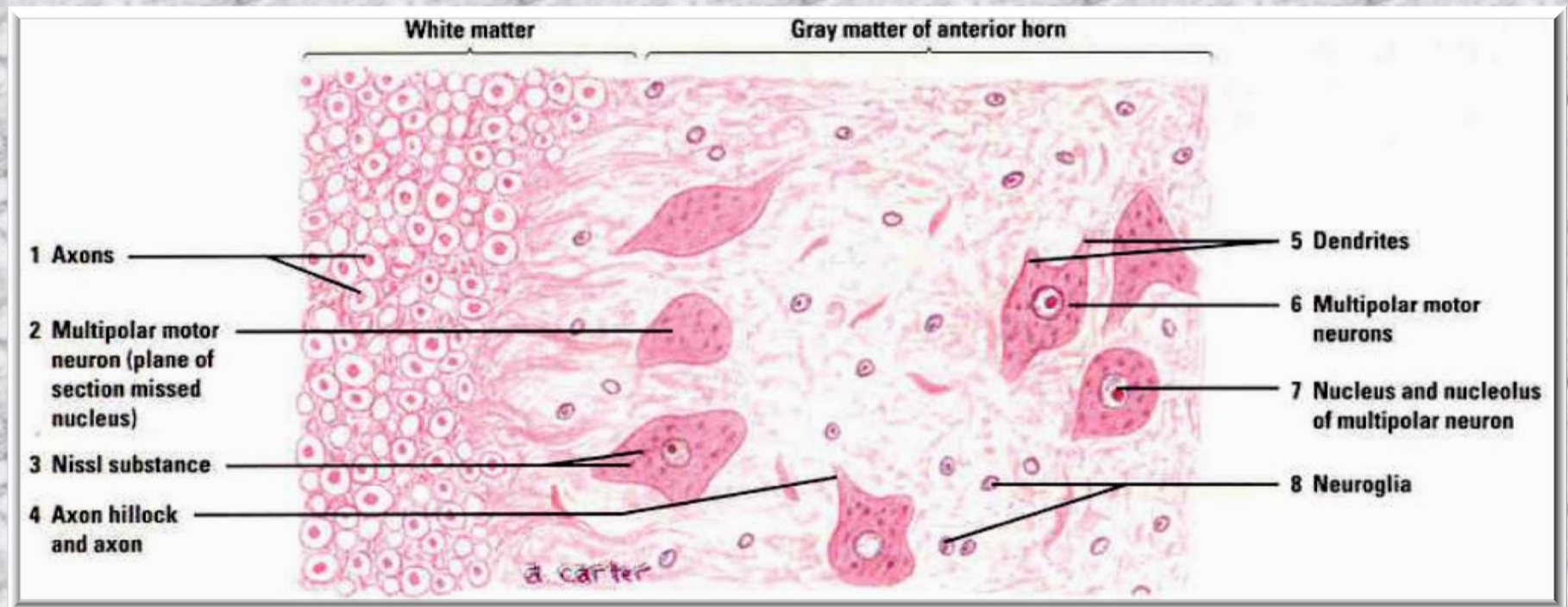


# Medulla spinalis



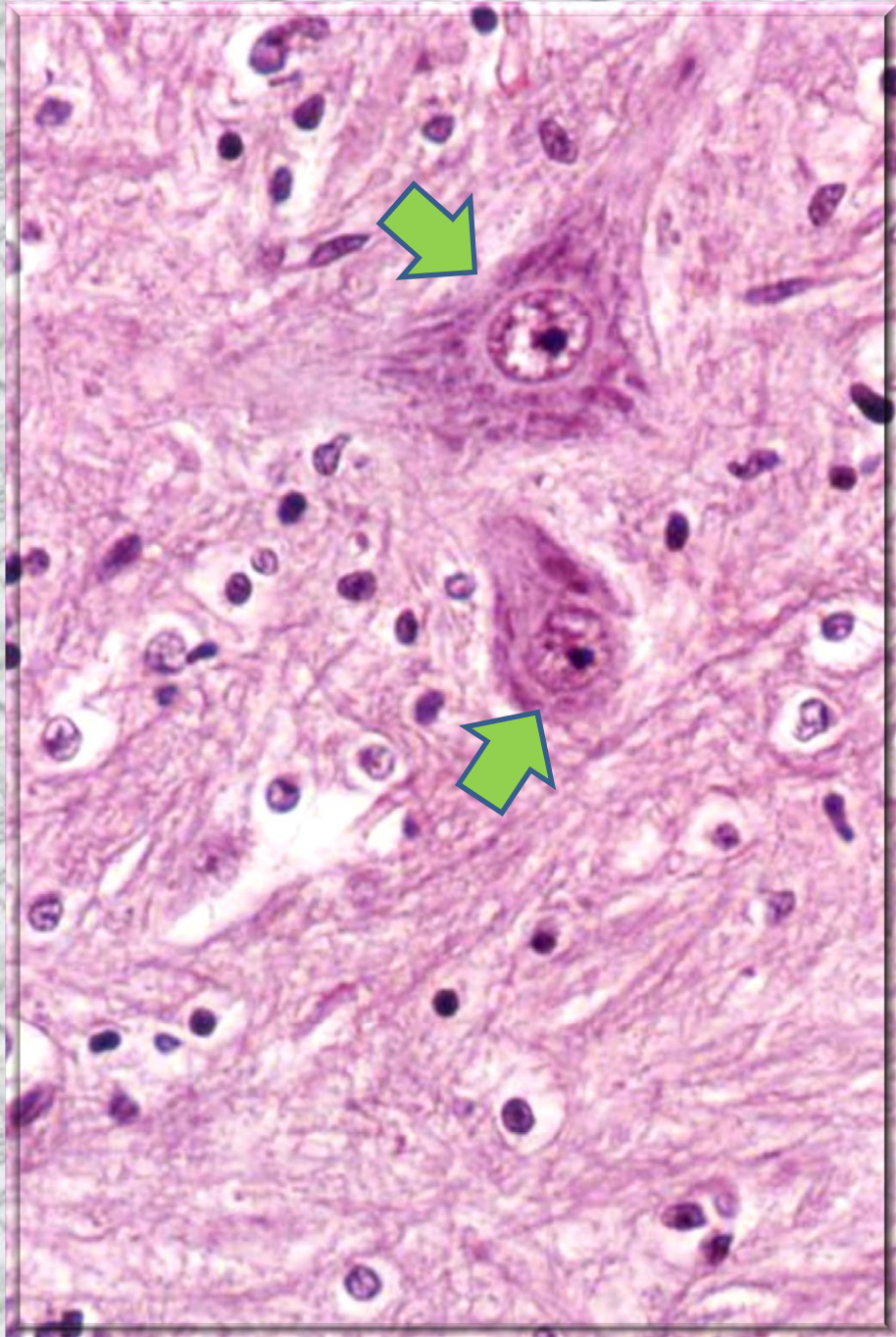
Цртеж на сивата и белата маса на medulla spinalis

# Medulla spinalis



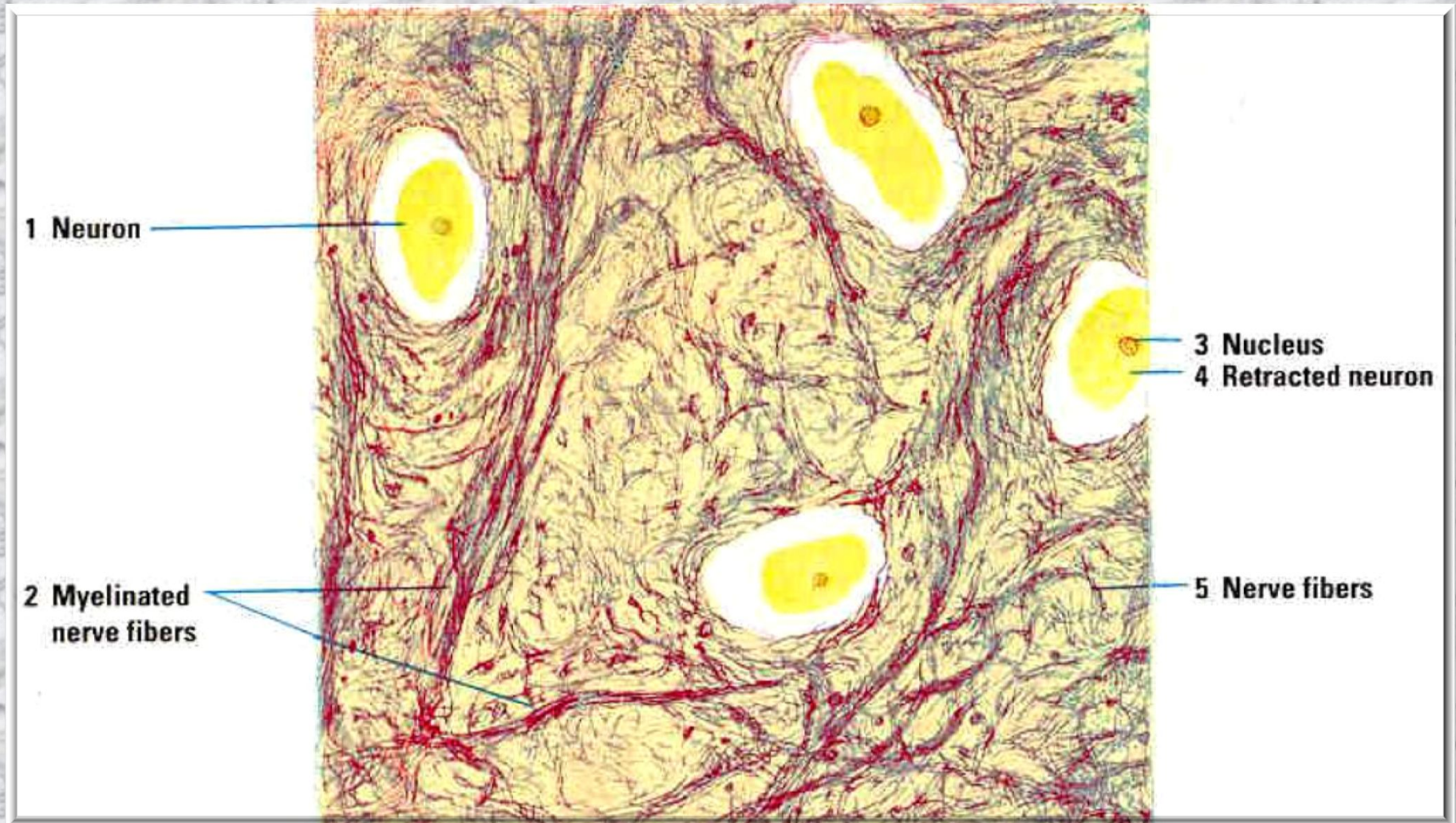
Цртеж на сивата и белата маса на medulla spinalis

## Medulla spinalis



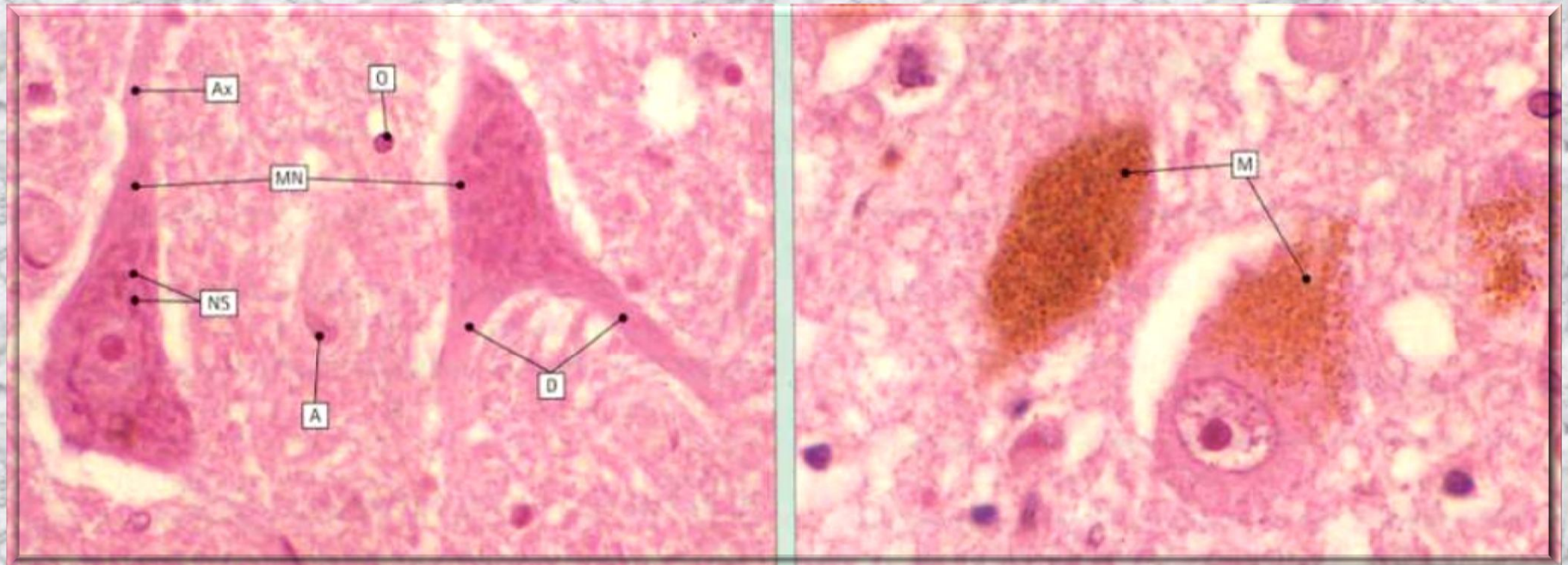
Мултиполарни нервни клетки во предните рогови од сивата маса на medulla spinalis

# Medulla spinalis



Нервни клетки и миелинизирани нервни влакна во medulla spinalis

# Medulla spinalis

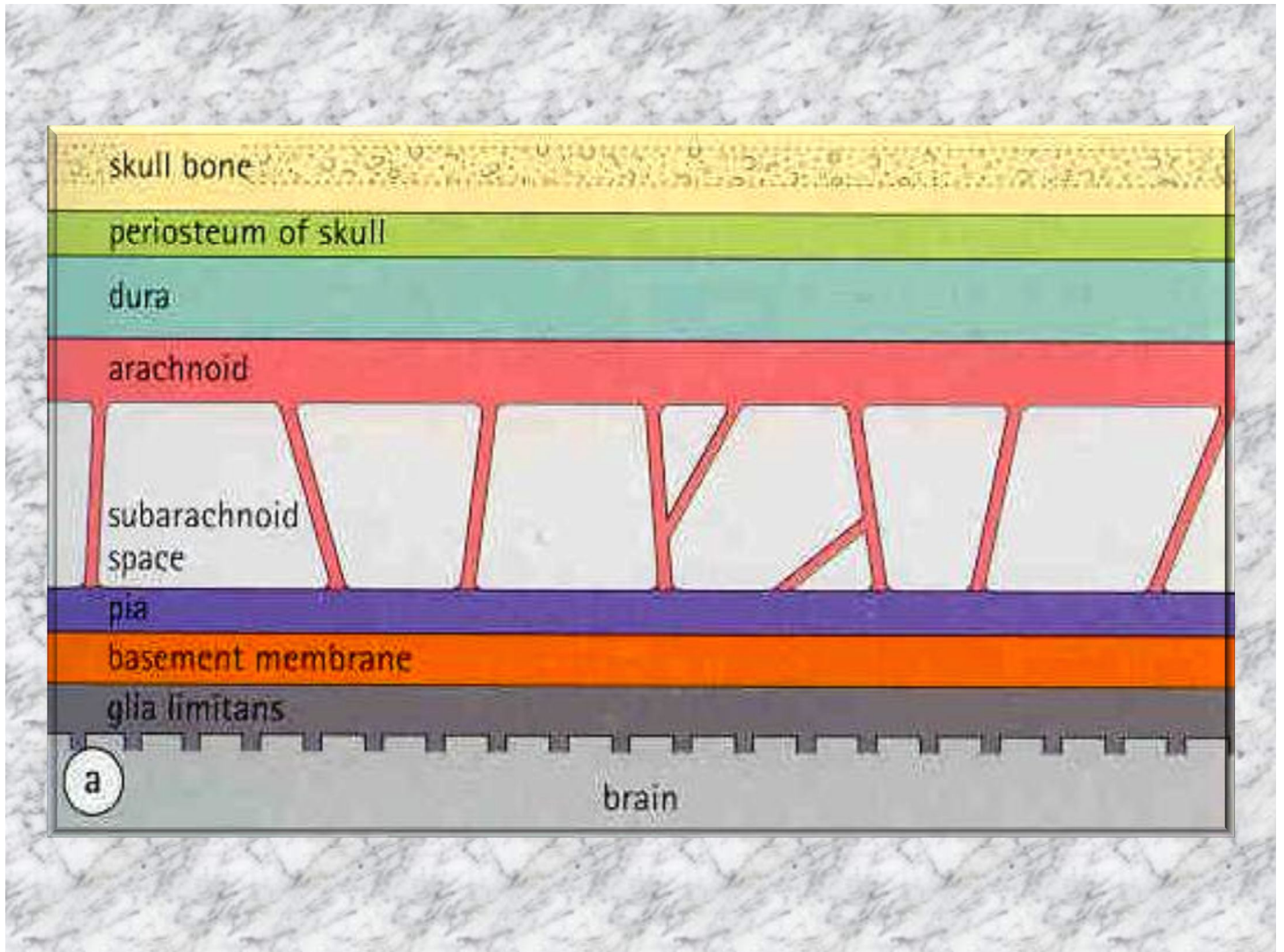


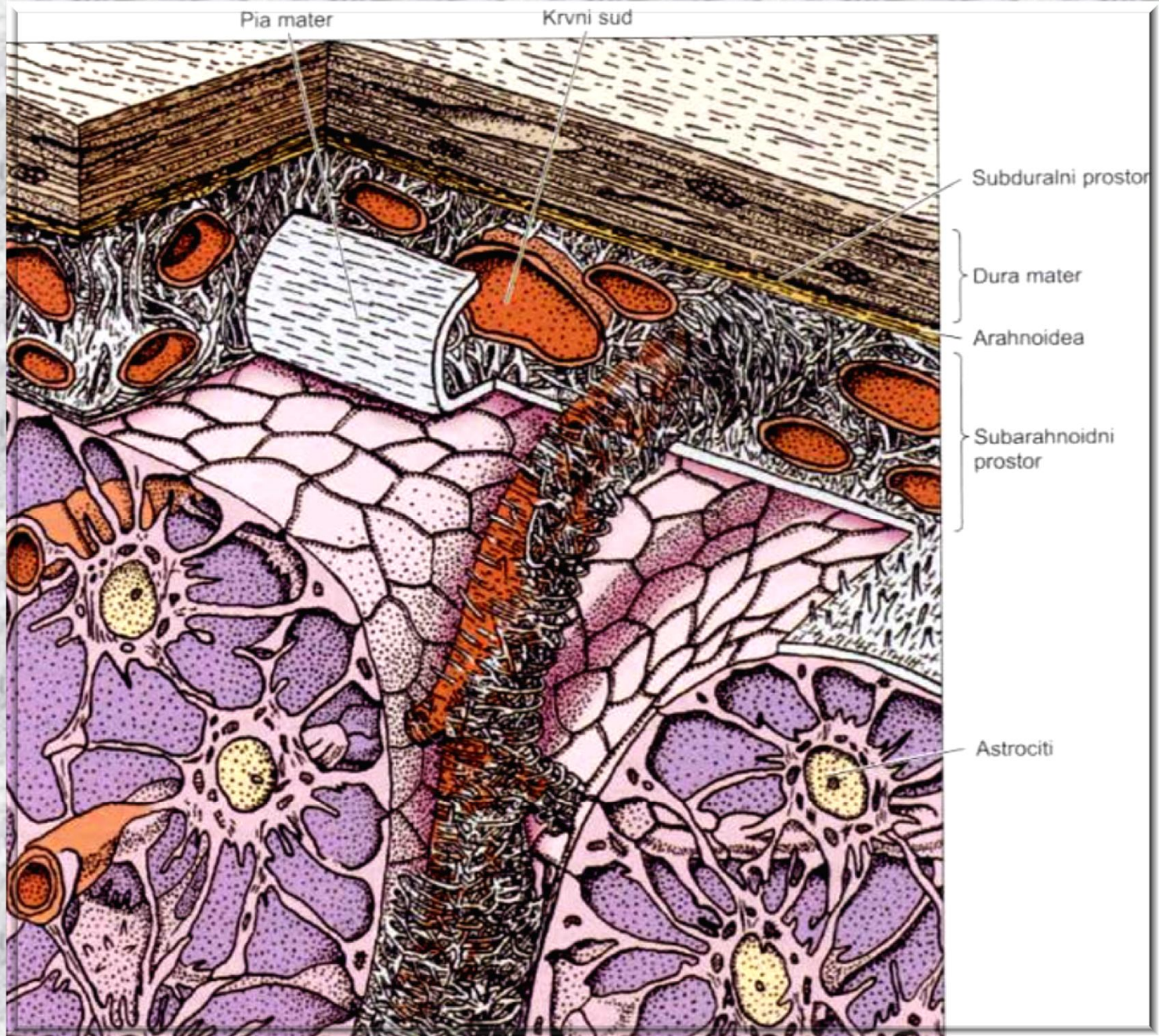
- MN – моторни неврони
- NS – Nissl-ова супстанција
- Ax – аксон
- D – дендрити
- A – астроцит

- M – невромеланински пигмент во нервните клетки

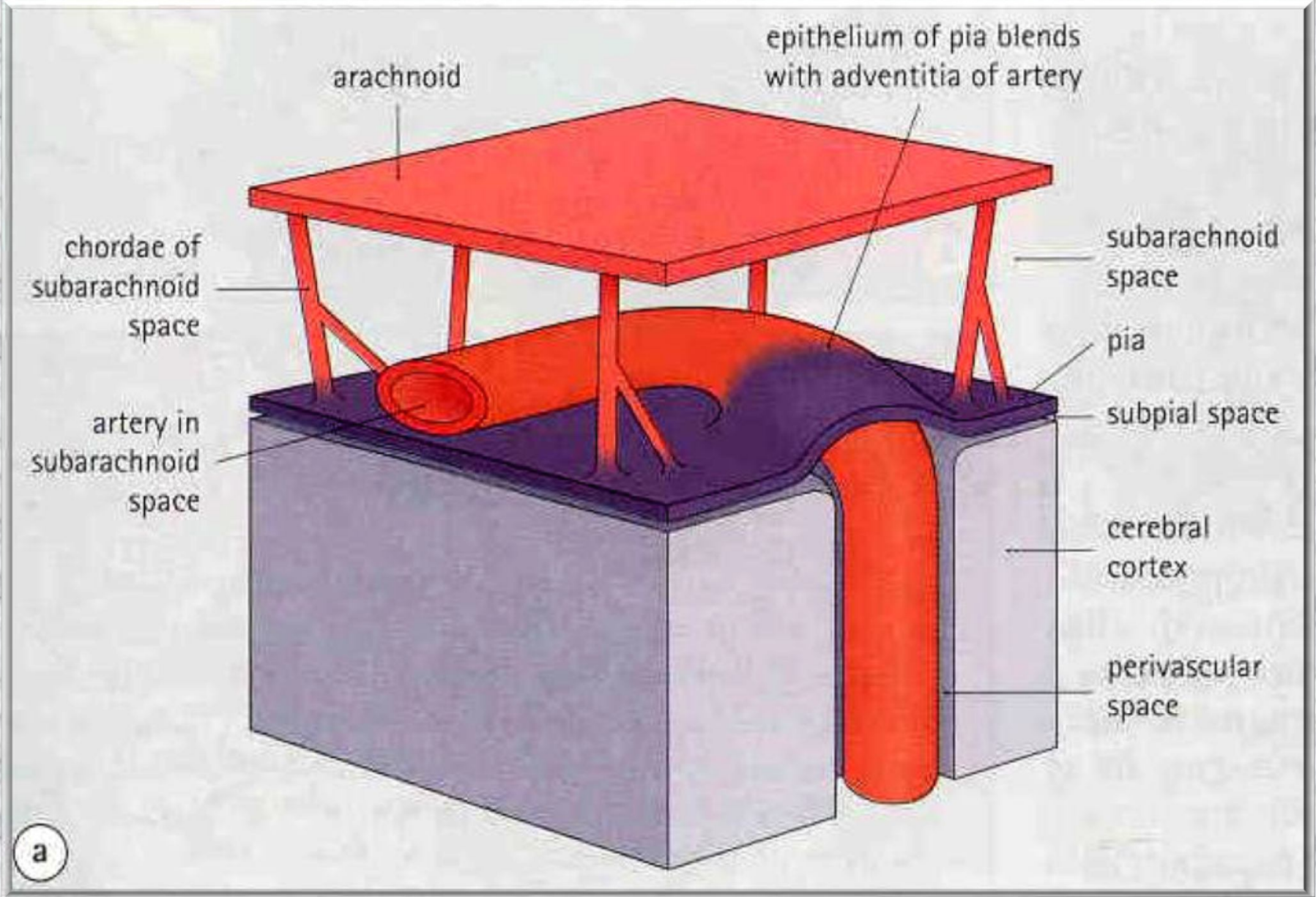


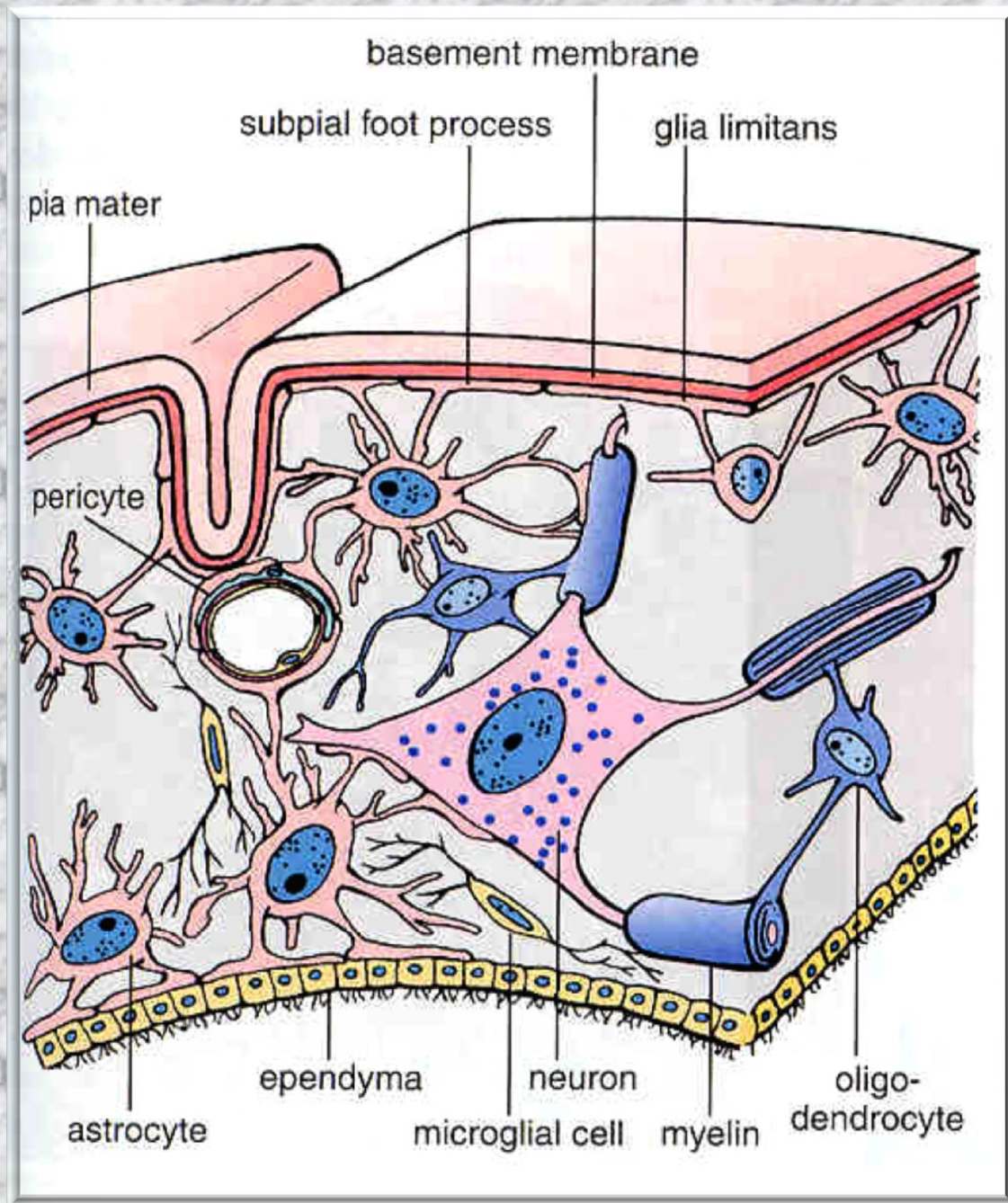
• **Karakteristiki na  
mozo~nata cirkulacija**

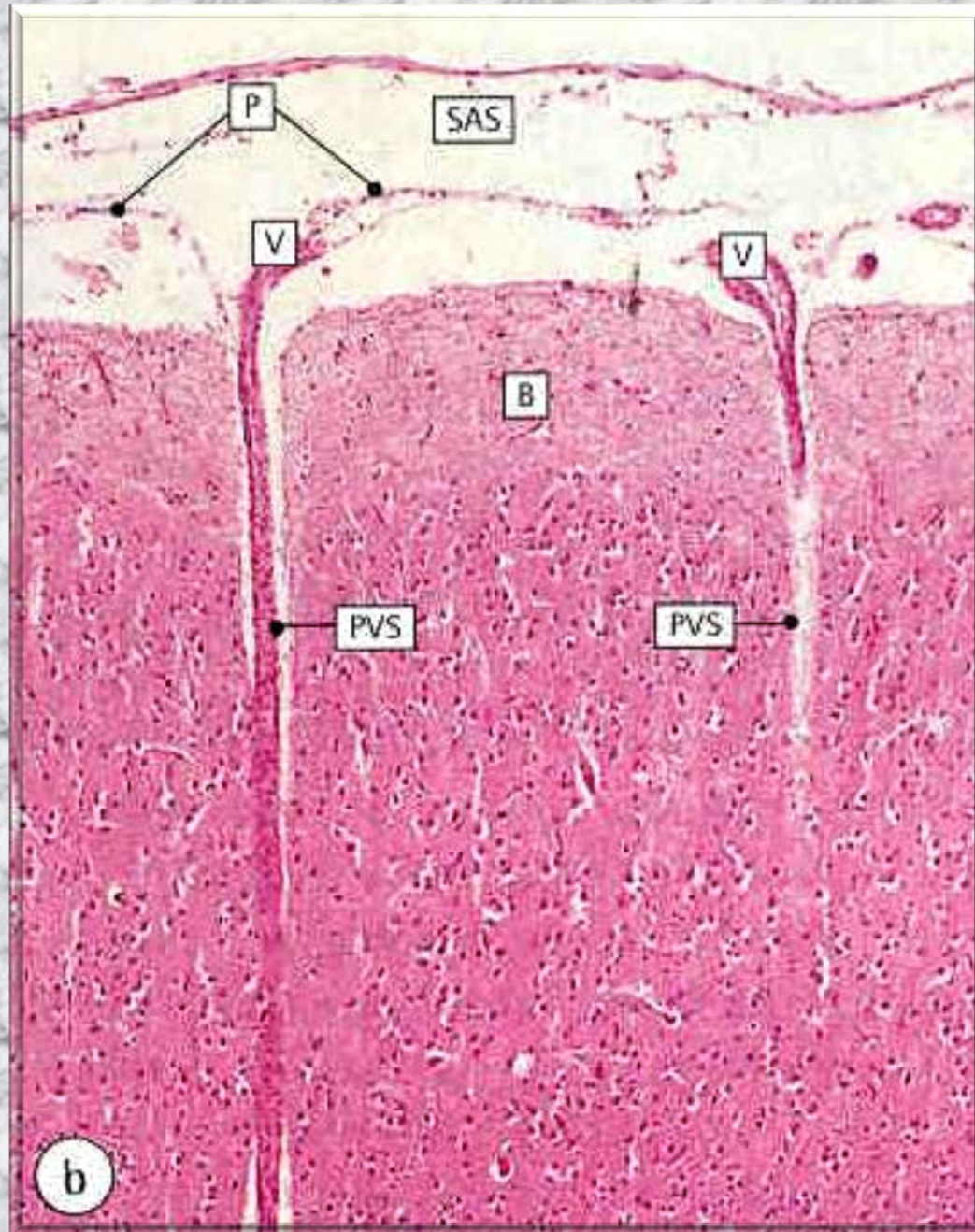






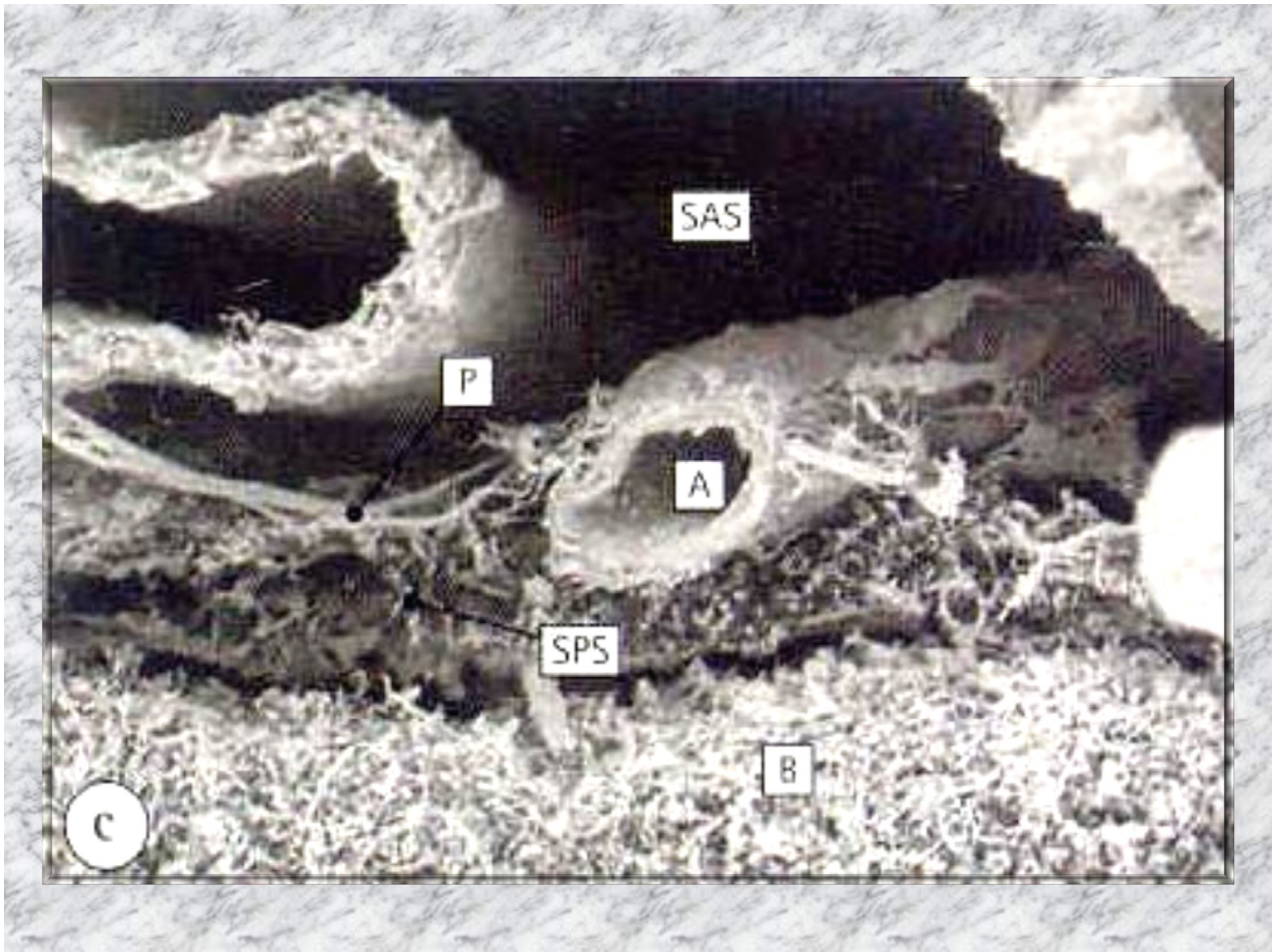




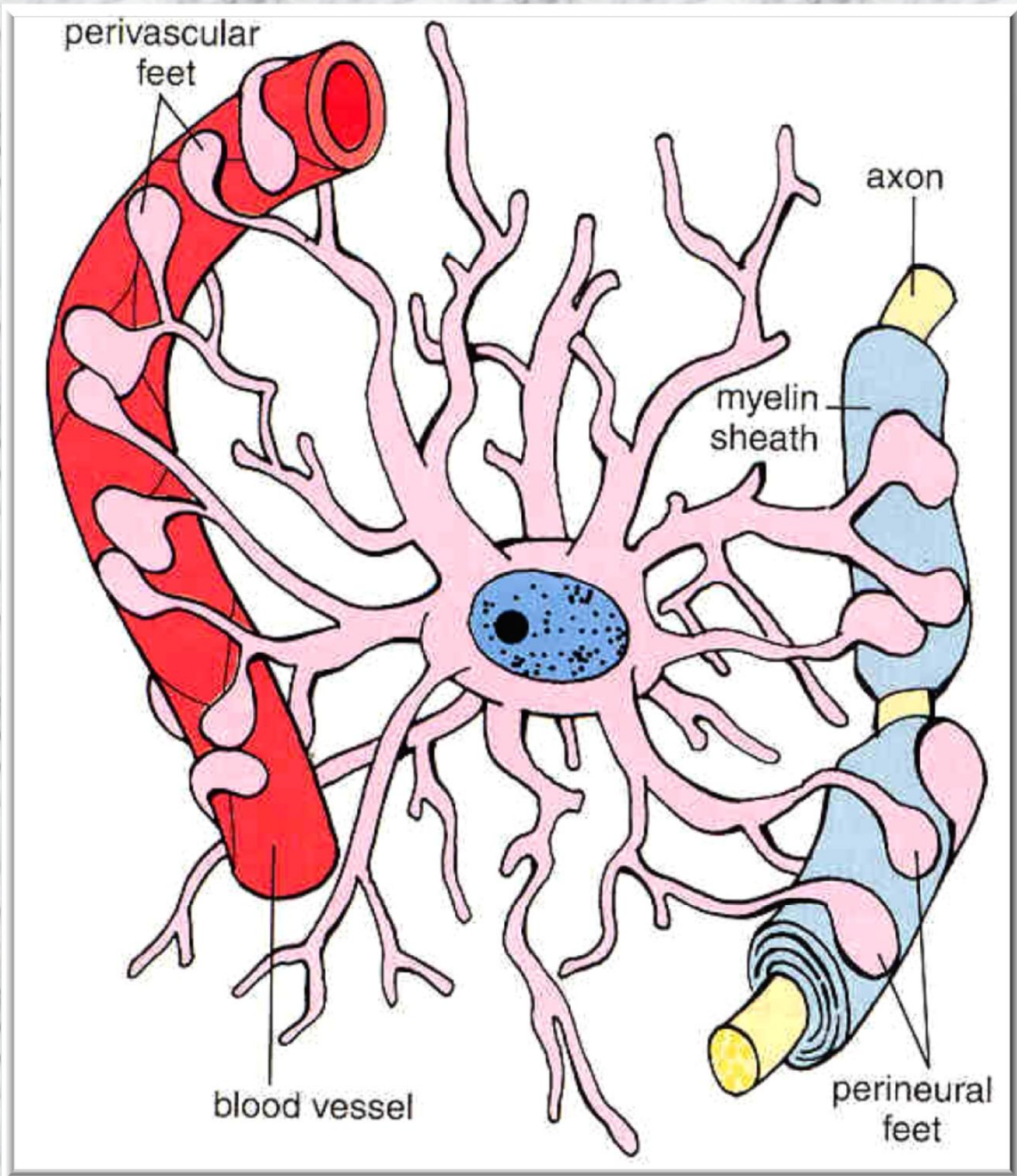


b

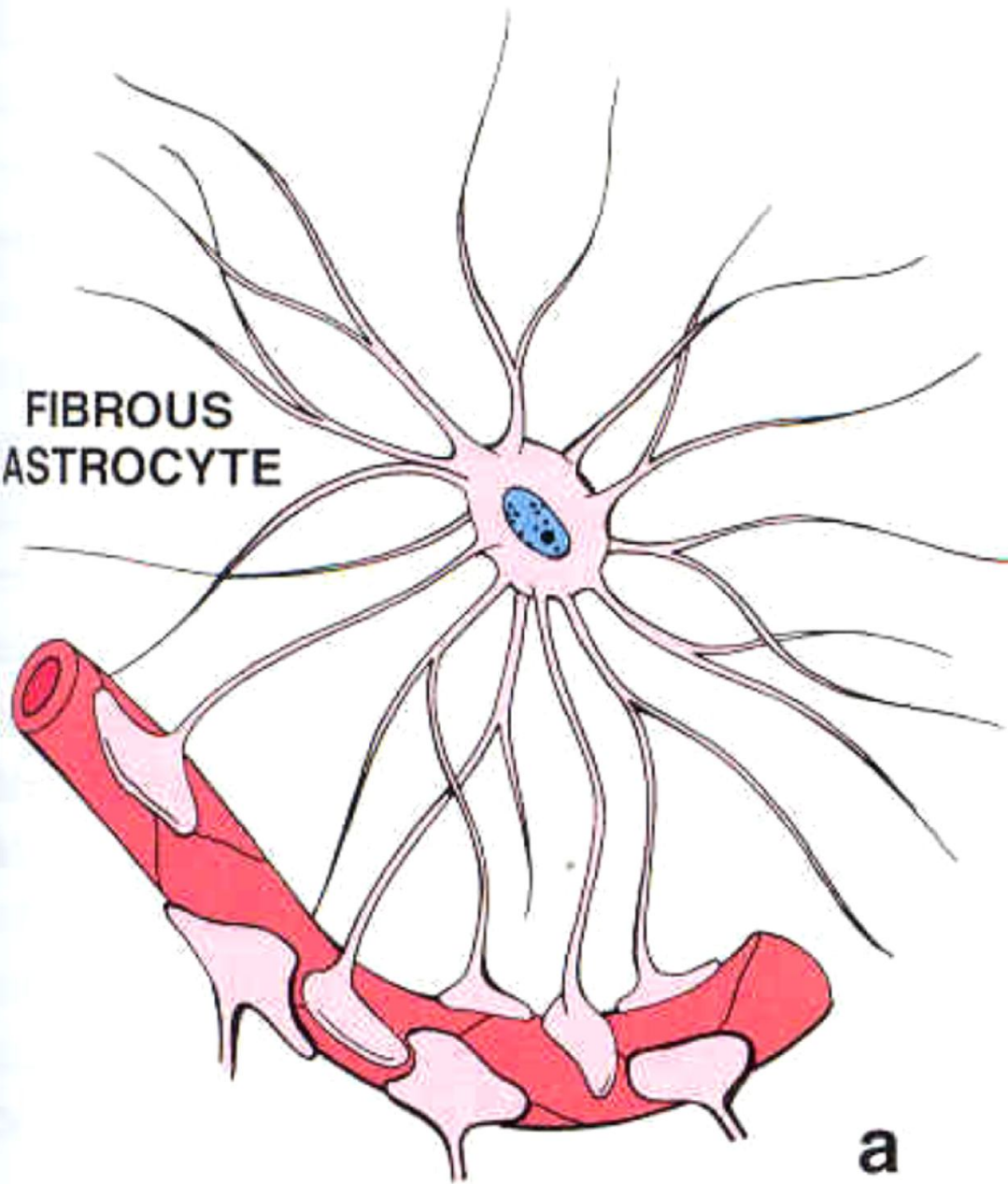








**FIBROUS  
ASTROCYTE**



**a**



